

INTERNATIONAL RANGE



CLOCK

INTERNATIONAL

Part No. **IAC1-1052-00B**

Type: Electrical
Range: 12 hours
Scale: Full
Dia: 52 mm
Bezel: Black Full "V"

Fitting Instructions



CLOCK

INTERNATIONAL

Part No. **IAC1-1052-01B**

Type: Electric
Range: 12 hours
Scale: Full
Dia: 52 mm
Bezel: Black Full "V"

Fitting Instructions



AMMETER

INTERNATIONAL

Part No. **IAM1-0052-03B**

Type: Electric
Range: 30-0-30
Scale: Arc
Dia: 52mm
Bezel: Black Full "V"

Fitting Instructions



Representative Image

AMMETER

INTERNATIONAL

Part No. **IAM1-0052-06B**

Type: Electric
Range: 60-0-60
Scale: Arc
Dia: 52mm
Bezel: Black Full "V"

Fitting Instructions



OIL PRESSURE

INTERNATIONAL

Part No. **IOP1-1552-07B**

Type: Electric
Range: 0-7bar
Scale: Arc
Dia: 52mm
Bezel: Black Full "V"

Fitting Instructions



Representative Image

OIL PRESSURE

INTERNATIONAL

Part No. **IOP1-1552-10B**

Type: Electric
Range: 0-10Bar
Scale: Arc
Dia: 52mm
Bezel: Black Full "V"

Fitting Instructions



FUEL LEVEL

INTERNATIONAL

Part No. **IFC1-1552-00B**

Type: Electric
Range: 0-1/2-1
Scale: Arc
Dia: 52mm
Bezel: Black Full "V"

Fitting Instructions



WATER TEMP

INTERNATIONAL

Part No. **ICT1-1452-12B**

Type: Electrical
Range: 40-140°C
Scale: Arc
Dia: 52mm
Bezel: Black Full "V"

Fitting Instructions



OIL TEMP**INTERNATIONAL****Part No. IOT1-1452-15B**

Type: Electrical
 Range: 50-150 °C
 Scale: Arc
 Dia: 52 mm
 Bezel: Black Full "V"

Fitting Instructions**TRANSMISSION OIL TEMP****INTERNATIONAL****Part No. ITT1-1452-15B**

Type: Electric
 Range: 50-150 °C
 Scale: Arc
 Dia: 52 mm
 Bezel: Black Full "V"

Fitting Instructions**VOLTMETER****INTERNATIONAL****Part No. IVO1-1052-02B**

Type: Electrical
 Range: 9-17 volts
 Scale: Arc
 Dia: 52 mm
 Bezel: Black Full "V"

Fitting Instructions**VOLTMETER****INTERNATIONAL****Part No. IVO1-1052-03B**

Type: Electric
 Range: 9-17 volts
 Scale: Arc
 Dia: 52 mm
 Bezel: Black Full "V"

Fitting Instructions**SPEEDOMETER****INTERNATIONAL****Part No. IES3-1B32-00B**

Type: Electric
 Range: 0-140 mph
 Scale: Full
 Dia: 80mm
 Bezel: Black Full "V"

Fitting Instructions**SPEEDOMETER****INTERNATIONAL****Part No. IES3-1B32-01B**

Type: Electric
 Range: 0-180 mph
 Scale: Full
 Dia: 80mm
 Bezel: Black Full "V"

Fitting Instructions**SPEEDOMETER****INTERNATIONAL****Part No. IES3-1B32-02B**

Type: Electric
 Range: 0-240 kph
 Scale: Full
 Dia: 80mm
 Bezel: Black Full "V"

Fitting Instructions

Representative Image

SPEEDOMETER**INTERNATIONAL****Part No. IES3-1B32-03B**

Type: Electric
 Range: 0-280 kph
 Scale: Full
 Dia: 80mm
 Bezel: Black Full "V"

Fitting Instructions

Representative Image

SPEEDOMETER**INTERNATIONAL****Part No. IES5-1B32-00B**

Type: Electric
 Range: 0-140 mph
 Scale: Full
 Dia: 100mm
 Bezel: Black Full "V"

Fitting Instructions

Representative Image

SPEEDOMETER**INTERNATIONAL****Part No. IES5-1B32-01B**

Type: Electrical
 Range: 0-180 mph
 Scale: Full
 Dia: 100mm
 Bezel: Black Full "V"

Fitting Instructions

SPEEDOMETER INTERNATIONAL

Part No. **IES5-1B32-02B**

Type: Electrical
Range: 0-240kph
Scale: Full
Dia: 100mm
Bezel: Black Full "V"
Fitting Instructions

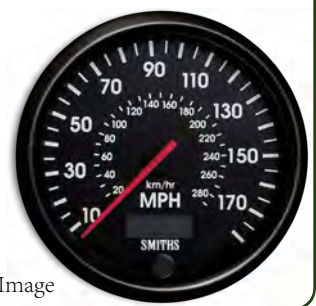


Representative Image

SPEEDOMETER

Part No. **IES5-1B32-03B**

Type: Electric
Range: 0-280kph
Scale: Full
Dia: 100 mm
Bezel: Black Full "V"
Fitting Instructions



Representative Image

TACHOMETER INTERNATIONAL

Part No. **IET3-5B32-00B**

Type: Electric
Range: 0-8000 RPM
Scale: Full
Dia: 80mm
Bezel: Black Full "V"
Fitting Instructions



TACHOMETER INTERNATIONAL

Part No. **IET3-5B32-03B**

Type: Electric
Range: 0-14000 RPM
Scale: Arc
Dia: 52 mm
Bezel: Black Full "V"
Fitting Instructions



TACHOMETER INTERNATIONAL

Part No. **IET5-5B32-00B**

Type: Electric
Range: 0-8000 RPM
Scale: Full
Dia: 100mm Bezel:
Black Full "V"
Fitting Instructions

